




INTERPORTO RIVERS

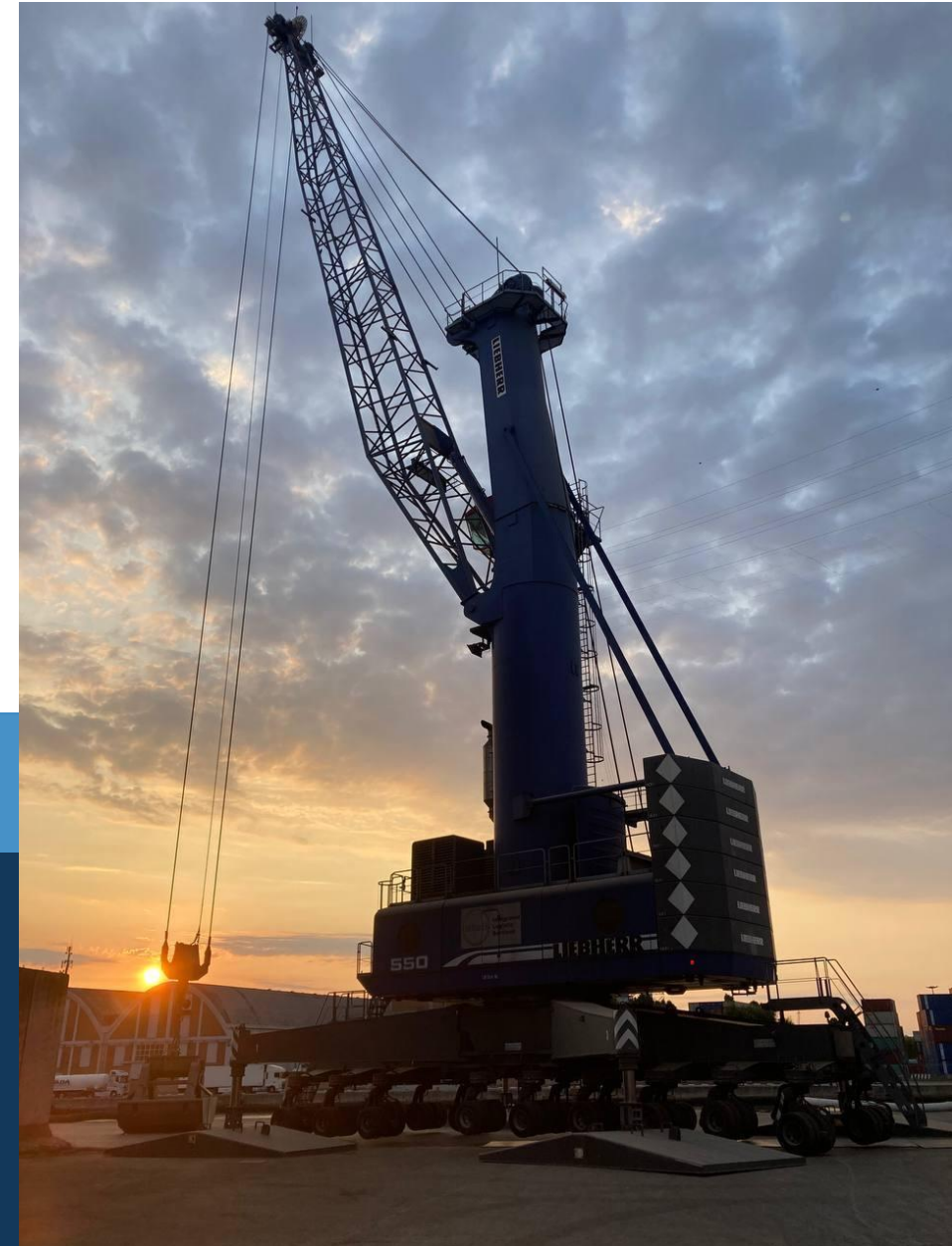
VENEZIA



The logistics hub of excellence
in north-eastern Italy

INDICE

1. WHO WE ARE	1
2. WHERE WE ARE	2
3. THE KNOW HOW	3
4. DEVELOPMENT AND OPPORTUNITIES	4
5. TERMINAL	5
5.1 INFRASTRUCTURE	6
5.2 SERVICES	8
5.3 MEANS	10
6. AREA MAP	13
7. CONTACT US	14



1. WHO WE ARE



Interporto Rivers Venezia is the logistics hub of excellence in the north-east. Located in a strategic area for the handling of goods and commodities from the north-south and east-west routes of Europe and the Asian, Middle Eastern and African markets, Interporto Rivers Venezia offers its customers a development platform overlooking the world.

Interporto Rivers Venezia is the natural outlet for one of the most active, diversified and enterprising economic areas in Italy. An infrastructure ready to seize the development opportunities of the entire Venetian port area, also thanks to its geographical characteristics and advanced interconnection to the main rail and road networks.

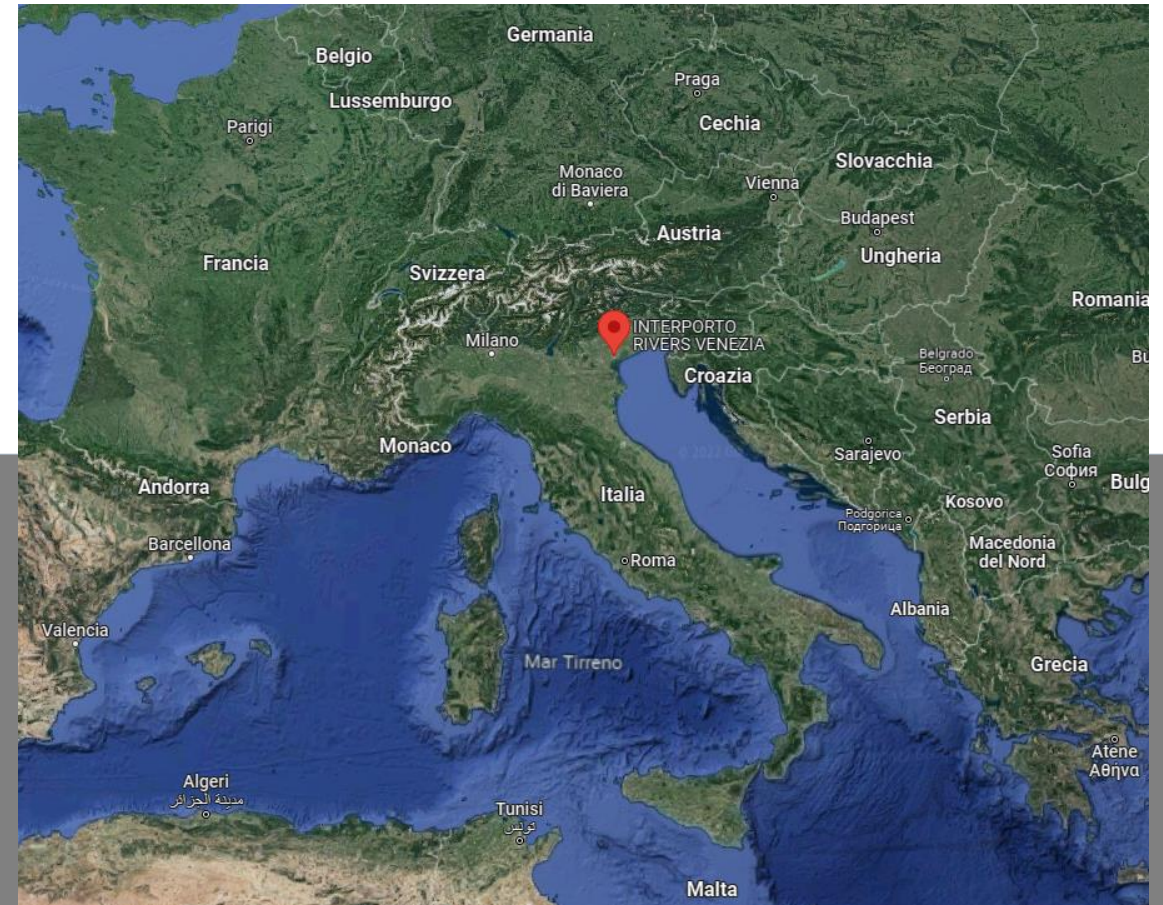
Interporto Rivers Venezia is located **in the heart of the industrial area of Porto Marghera** (Venice), adjacent to the Canale Ovest, the primary access to the waterways of the Venice Lagoon, as well as to the Lido and Malamocco inlets.

The road network provides **easy access to the terminal** via the SS11 (Romea Commerciale motorway, in the direction of Chioggia/Ravenna) or via a short connecting stretch of about 1 km that leads to the main motorway junctions with the A4 (Turin/Trieste), A13 (Padua-Bologna), A23 (Palmanova-Tarvisio), A27 (Venice-Belluno), A28 (Portogruaro-Pordenone).

IRV is also **connected to the nearby Venezia Mestre station**, less than 4 km away, and to **Venice International Airport**, less than 15 km away.

The IRV logistics platform **fits directly into the trade traffic** represented by the Berlin/Palermo motorway corridor and the Lisbon/Budapest corridor.

2. WHERE WE ARE



3. THE KNOW HOW

Interporto Rivers Venezia has the ambitious goal of becoming a benchmark international multipurpose terminal, offering its **customers integrated management of the entire logistics chain**, based on the model that has been extraordinarily successful and established for over forty years in Africa.



This is the know-how of the Orlean Invest group, which, through its subsidiaries, has developed the very concept of 'integrated port logistics' in Nigeria with Intels Nigeria Limited, in Mozambique with ENHILS, in Angola with SONILS, and for the first time in Europe, in Interporto Rivers Venezia.



4. DEVELOPMENT AND OPPORTUNITIES



Logistics will be one of the fundamental growth assets of **Interporto Rivers Venezia**.

A development for which the identification and training of technical and IT professionals will be fundamental.

The aim is to go beyond normal port production processes and to do this, the development of new people will be crucial, making Interporto Rivers a hub for HR research and development, with the creation of new jobs.

5. THE TERMINAL



Infrastructure



Services



Resources



5.1 INFRASTRUCTURE

Interporto Rivers infrastructures

Interporto Rivers Venezia covers a private area of approximately **240,000 m²**.

- **Open storage areas** of approximately 100,000 m²
- **Covered storage areas** of approximately 90.000 m²
- **Offices** covering approximately 9,500 m²
- **Quay** 500m long and 9.75m draught
- **Rail connection** - length 2,000 m connected to the nearby Venezia Mestre station



Interporto Rivers Venezia is equipped with **warehouses certified** for the storage of cereals for human and animal food use (feed & food), as well as **areas authorised for the storage of non-hazardous waste** (scrap metal, coal fly ash, glass, etc.).

Large **yards for storing bulk and packaged goods** and 16,000 m² of covered warehouse space ideal for **urban logistics** complete the terminal's infrastructure stock.

Mechanised lines by means of conveyor belts connect the quay to silos and vertical warehouses, increasing the turnaround of ships.



5.2 SERVICES

Rivers Interporto Services

Interporto Rivers Venezia is a **multipurpose** terminal with extreme **flexibility** and **efficiency** in the management of **general cargo** and **dry bulk** and in constant compliance with current **environmental regulations** and attentive to the **needs** of individual customers.

The main types of goods handled by Interporto Rivers Venezia vary from **dry bulk** (cereals, flour, clinker, coals, sand, cement, ores, etc.), **steel products** in bulk and in bundles (pig iron, ferro-alloys, coils, slabs, billets, wire rod, rebar, pipes, scrap metal and glass, etc.) to **heavy carpentry/project cargo** and packaged goods.



THE LOGISTICAL CYCLE OF GOODS



**Disembarkation/
embarkation
services**



**Goods weighing
services**



**Goods screening
services**



**Goods storage
services**



**Customs
clearance
services**



**Custody and
storage services**

Return Services



Interporto Rivers Venezia is able to offer users a **combined ship, road and rail service**. Goods can be reloaded either during ship disembarkation, by hopper, or from the yard and/or warehouse by shovel or forklift. Truck-to-truck loading takes place by drop through integrated loading nozzles with a modern computerised weighing system that automatically performs the intake control. In addition, Interporto Rivers Venezia offers **modern computerised management** and forms that allow all stakeholders involved, such as customers, shippers and carriers, continuous control and contact in real time.



5.3 RESOURCES

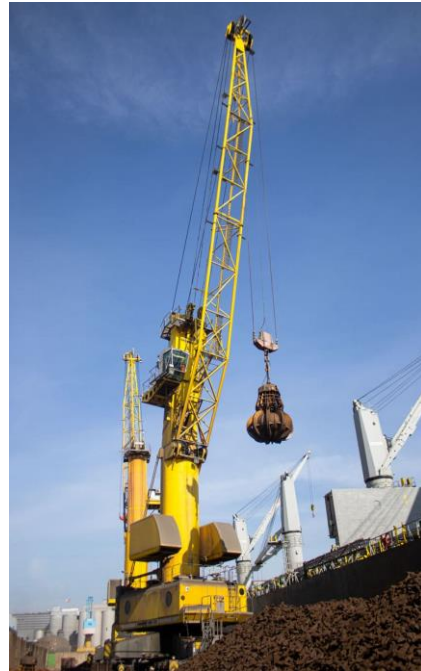
Interporto Rivers resources

Interporto Rivers Venezia has implemented a continuous **upgrade** of the terminal's vehicle fleet and infrastructure in order to maximise the efficiency of port operations and provide an effective response to customer needs.

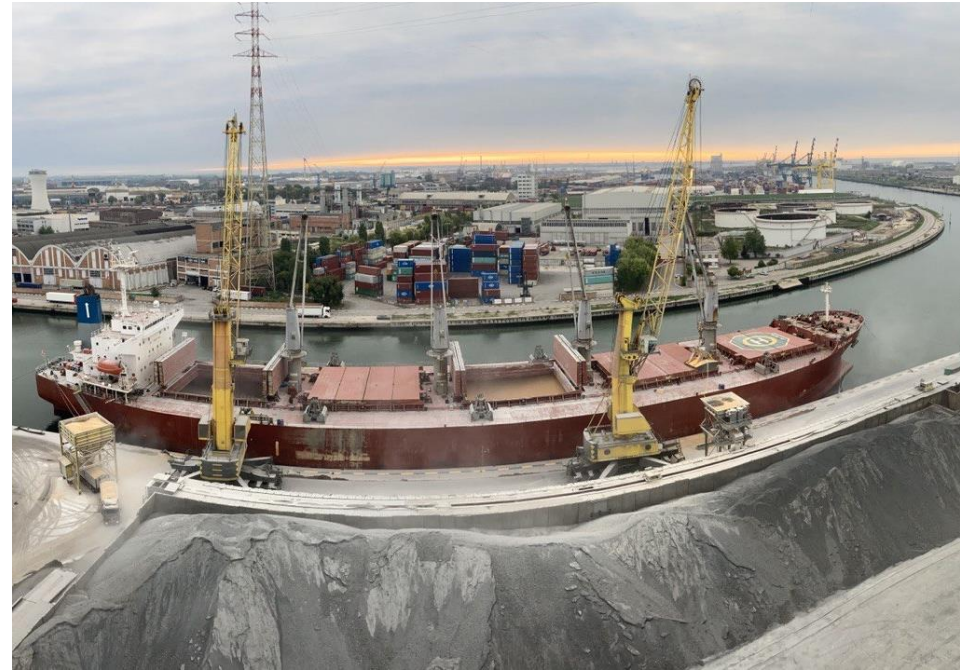
CRANES



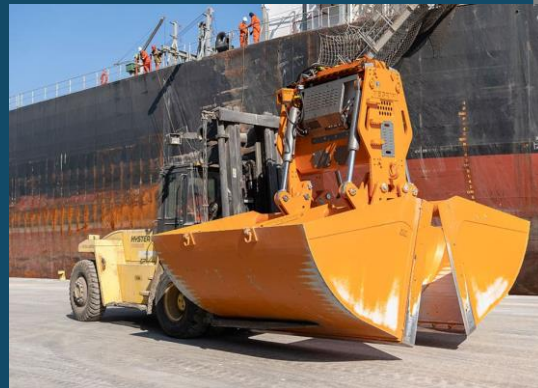
(1) LHM 550 from 130 tons swl



(2) LHM 250 from 80 tons swl



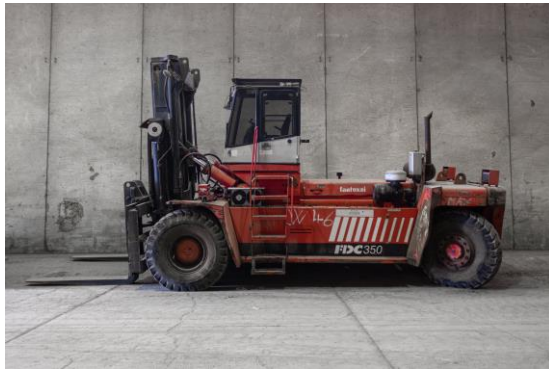
(3) LHM 320 from 100 tons swl



Liebherr quay cranes guarantee high reliability and terminal capacity through efficient unloading and loading.

The quayside cranes are complemented by a large stock of lifting equipment consisting of 8 buckets (10 to 25 cbm capacity), 4 mechanical grabs, C-hooks for coils, scales, magnets for the optimal and efficient management of the various commodities handled.

FORKLIFTS



We have a fleet of 5 units from 18 to 35 tons and 4 units of 3 to 4 tons.

HOPPERS AND AUGERS



The terminal is equipped with 4 hoppers and 4 screw conveyors that allow the smooth handling of unloading and reloading of dry bulk cargo.

MECHANISED BELT AND PIPELINE



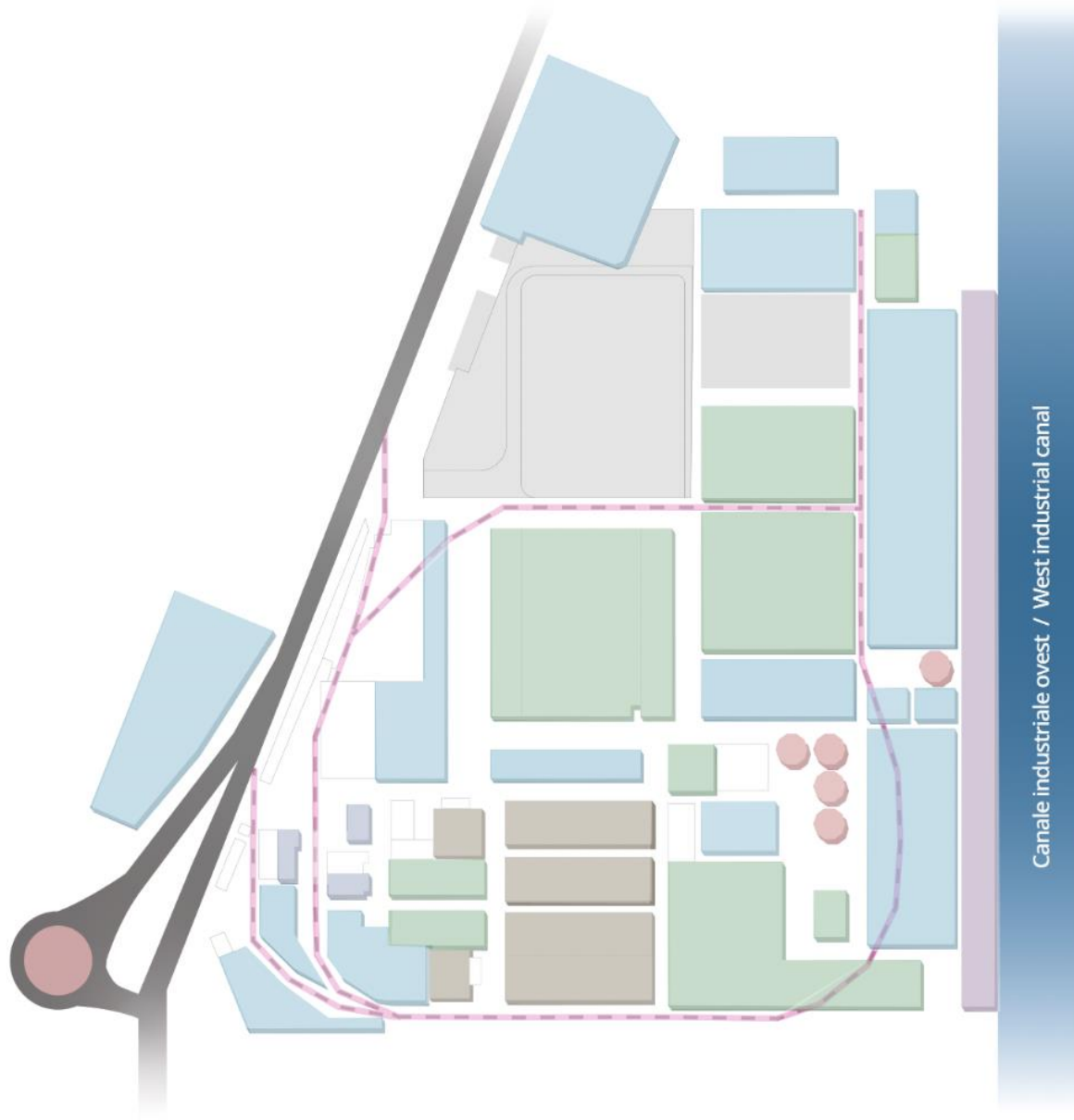
Mechanised belts that directly connect the quayside operational area to the warehouses/storage silos and pipelines that enable the operation of self-pumping vessels and the ensilage of materials discharged from them.

MECHANICAL SHOVELS, EXCAVATORS AND SCALPERS



We also have a fleet of 7 mechanical shovels and 2 excavators and 1 Sandvik QE241 scalper.

6. MAP OF INTERPORT AREAS



- Uncovered Areas
- Warehouses
- Dock
- Silos
- Production facilities
- Railway Junction

7. CONTACTS

Interporto Rivers Venezia is located at
via dell'Elettricità, 21
30175 Marghera (VE) - Italia

Commercial

+39 041 259 1254
commerciale@interportorivers.com

Operational

+39 041 259 1292
shipping@interportorivers.com

Deliveries

+39 041 259 1287
riconsegne@interportorivers.com

RSPP

+39 348 321 3483

PFSO

+39 041 259 1271
+39 347 282 3734