



PEMBA OIL & GAS SERVICE CENTRE

**Integrated Logistic Base
Solution in Cabo Delgado,
Moçambique**

index

Portos de Cabo	03
Sub-concessionaire	
Key features	04
ENHILS	06
Pemba Oil & Gas Service Centre	
Overview	08
Special Economic Zone Status	10
Activities	12
Local Content	13
Phase 1	
Development	15
Warehouses and offices	18
Wharf / causeway	20
Pontoon / barge	21
Phase 2	
Overview	23
Site Pictures	28



THE MAIN-CONCESSIONAIRE

PORTOS DE CABO (PCD)

Portos de Cabo Delgado, SA (PCD) is a public company equally owned by Empresa Nacional de Hidrocarbonetos (ENH), the National Oil Company, and by Portos e Caminhos de Ferro de Moçambique (CFM), the National Ports and Railways Company.

In order to ensure the development of a top-class infrastructure to support the Oil & Gas industry in Northern Mozambique, in December 2013 the Mozambican Government appointed PCD as the Main Concessionaire of an area of 1,040 Ha in Pemba for a period of 30 years, through the signing of the Concession Agreement.

Under the terms of the Concession Agreement, the Main Concessionaire is granted with the right to develop projects for logistical and port support to petroleum operations within a distance from the border with Tanzania up to 300 nautical miles to the south of Pemba, including the waters of the territorial sea along the corresponding coastal strip.

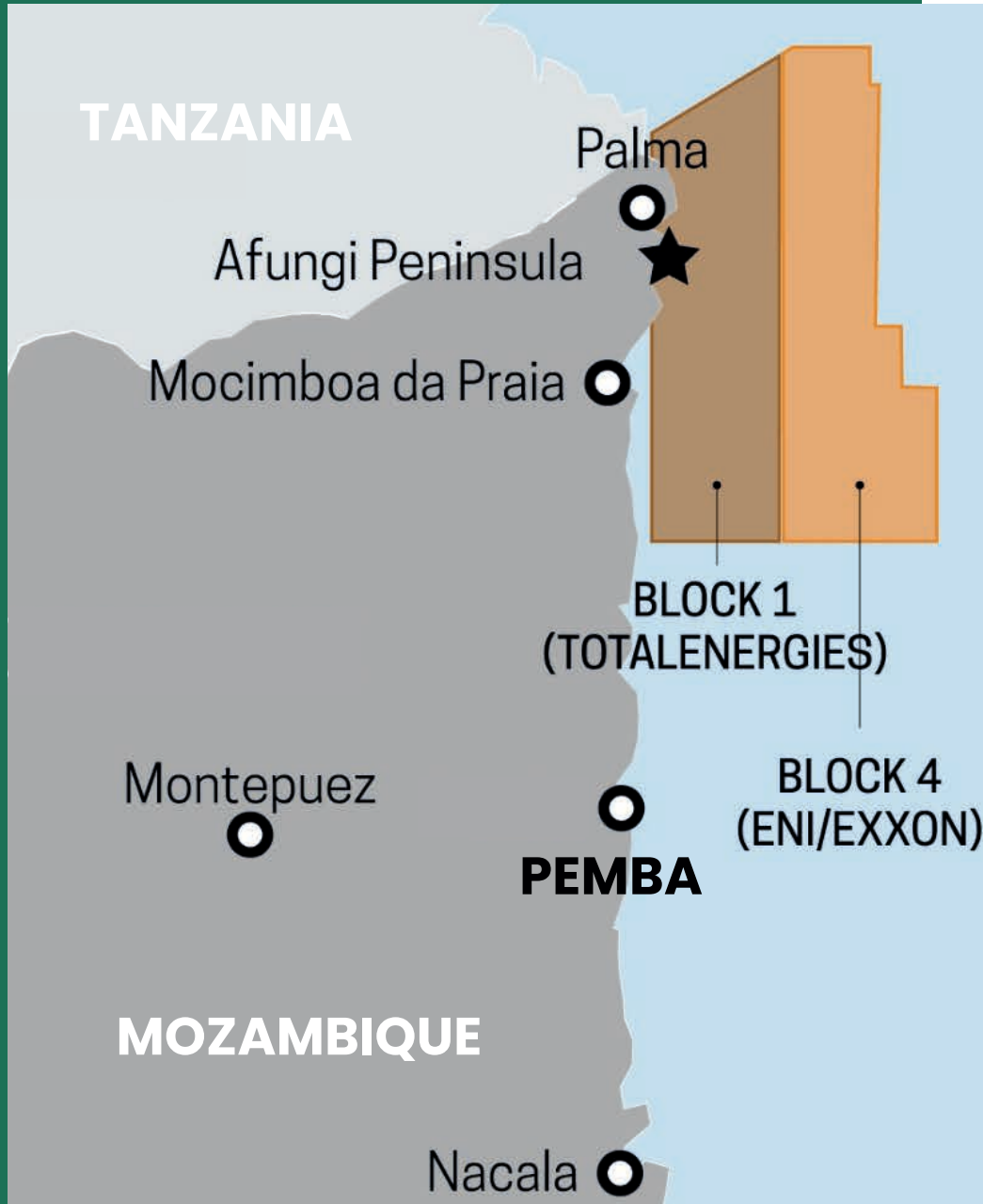
SUB-CONCESSION AGREEMENT

KEY FEATURES

Duration: 30 years with possibility for further extension.

Area: 1,040 Ha. Special Economic Zone Status under process.





A STRATEGIC GEOGRAPHICAL POSITION

Pemba is the most suitable location for the development of a large scale and fully integrated Oil & Gas Service Centre to serve the Mozambican Oil & Gas Industry.

Its strategic geographical position will allow the Pemba Oil & Gas Service Centre to cater to the requirements of the current and future blocks from the Northern Border to Nacala, Angoche, Quelimane, as well as the South Tanzania, Comoros, Madagascar and eventually the area of Malawi Lake.

THE SUB-CONCESSIONAIRE

ENHILS

In June 2014, a Sub-Concession Agreement was signed and entered between PCD and ENHILS.

Under the terms of such Sub-Concession Agreement:



THE SUB-CONCESSIONAIRE

ENHILS

PCD grants ENHILS the right, in its capacity as sole operator, to design, finance, operate and maintain the Pemba logistics and port terminal in the Pemba Concession Area to provide logistics and port support.

PCD guarantees ENHILS the preference in the supply of pilotage and stevedoring services to be provided in the Palma port marine facilities under the Concession Agreement.

PCD guarantees ENHILS the preference in the subcontracting of the collection of certain pilotage and stevedoring legal charges/ duties from customers in the Cabo Delgado Province, from the Tanzania border up to three hundred (300) nautical miles south of Pemba, including the Mozambican national waters corresponding to this coastline.

PEMBA OIL & GAS SERVICE CENTRE

OVERVIEW

The Project's Vision is based upon the establishment of an Oil & Gas offshore logistics support base, located in a dedicated seaport.

The aim is to bring together the different activities and services required by the Oil & Gas Industry, under a "One-Stop Shop" concept.



KEY POINTS



- Maximise local content.
- Minimize overall environmental impact.
- Full fledged integrated logistics solution for the entire current and future exploration, development and related downstream activities.
- Shared port infrastructure to minimise Capex and Opex.
- Economies of scale and synergies between various sectors – Oil and Gas, mining and industrial activities.
- No multiple locations for port and Oil & Gas support facilities to exercise effective control over the development.
- Creation of a special economic zone–port and associated facilities.
- Long term planning (minimum 30 years look ahead).
- Creation of long term legacy beyond Oil and Gas services, catering companies, etc.
- Fully furnished residential and commercial facilities.

S.E.Z.

SPECIAL ECONOMIC ZONE STATUS*

*soon to be awarded



SEZ Status allows a number of incentives and advantages:

INCENTIVES

- VAT & Custom Duties Incentives
- Repatriations of Profits, Dividends and Capital allowed
- More favorable Quota Regime for Foreign Workers
- Other incentives

ADVANTAGES

- Fast-track Clearing and Cargo Movement Procedures
- Reduction in Overall Project Costs
- Cash Flow Benefits
- Other Advantages

Establishing an Oil & Gas Hub hosting the whole Oil & Gas Production Chain in one single location:

- Higher Operational Efficiency
- Higher Cost Effectiveness
- No Double-handling Costs due to Multiple Locations



STEVEDORING

Stevedoring is an activity central to any maritime industry and in the Oil & Gas Industry it is essential that all stevedoring operations are performed by specially trained operators.

ENHILS, on appointment as a Stevedoring Company by PCD-Portos de Cabo Delgado SA, will perform all stevedoring operations either on-shore at ports or off-shore on platform, rigs and flow stations through application of approved Stevedoring Services Tariff.

PILOTAGE / MARINE SERVICES

Offshore Oil & Gas activities call for a high number of movements between various rigs, platforms and other offshore facilities, in addition to their port / logistics base visits.

ENHILS, on appointment, will act as general Managing Agent on behalf of PCD-Portos de Cabo Delgado, SA, in monitoring and recording of all offshore supply vessels and drilling rigs movements, inspection of vessels official documentation, collection and submission of the masters declaration to the authorities for appropriate and accurate invoicing through application of approved Pilotage/ Marine Services Tariff.

LOCAL CONTENT

ENHILS is committed to support the development of the Mozambican Oil & Gas Industry through maximizing the use of Mozambican Human Resources, Materials, Equipment and Services in its operations, in a sustainable manner and without compromising the company's values, quality and HSE standards.

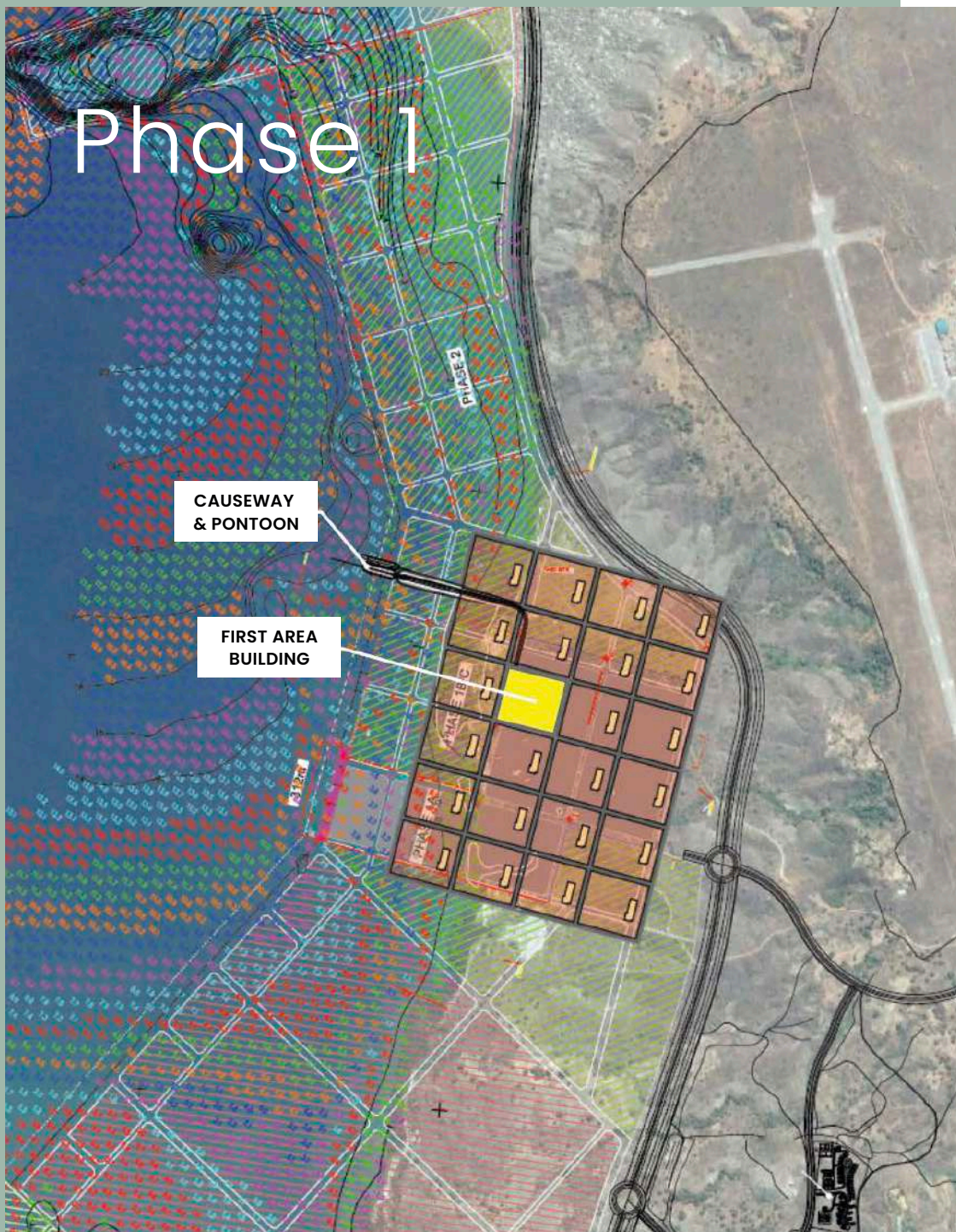
MAIN COURSES OF ACTION

- Promoting Job Creating.
- Facilitating Transfer of Skills.
- Easing Technology Transfer.
- Granting preference to Mozambican Suppliers and Service Companies whenever the price/quality ratio allows.



**PEMBA
OIL & GAS
SERVICE CENTRE**

Phase 1



Phase 1

TOTAL AREA: 35.000 sqm

ENCOMPASSES THE CONSTRUCTION OF:

Stacking Area: 35.000 sqm

Marshalling Area: 3.000 sqm

Warehouse/Offices: 1.700 sqm

Pontoon: 110x28x7 10t/sqm

Causeway connecting pontoon
to shoreline

Phase 1



The first development activity affects an area of 35.000 sqm.

Plots of land for further development have been already identified: tailor-made ad-hoc solutions can be accommodated based on Clients' requirements.



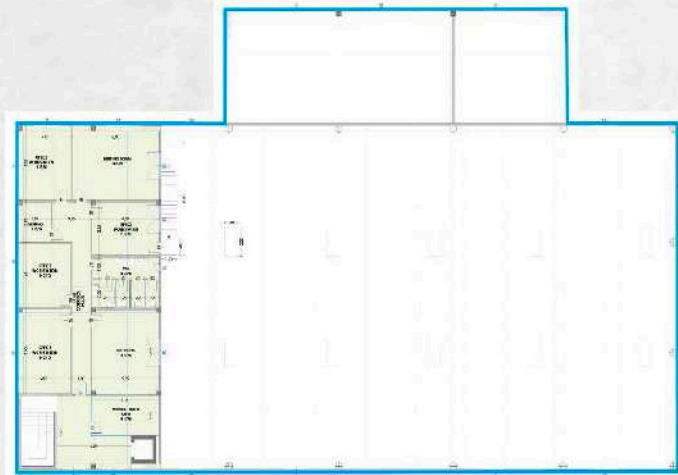
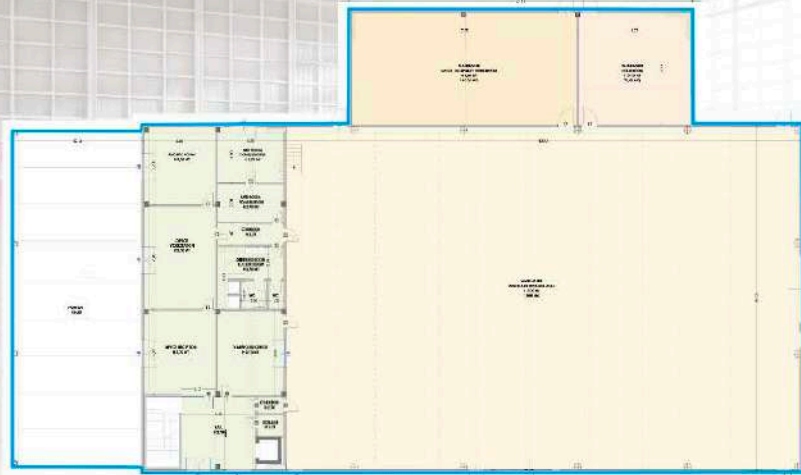
Phase 1



The Pemba Oil and Gas Service Centre will provide logistics services to oil & gas producing and service companies (shipping lines and vessel operators, drilling contractors, tubular stockist and machine shop, drilling fluid services, pipe coating services, cement companies) and other relevant industries.

1. Stacking Area: 35,000Sqm
2. Marshalling Area: 3,000Sqm
3. Warehouse/Offices: 1,700 Sqm
4. Wharf / Causeway connecting pontoon to shoreline
5. Pontoon 110x28x7 10t/Sqm

Phase 1



3. WAREHOUSE & OFFICES

KEY FEATURES:

- Covered Storage Area.
- Safety Equipment Store Room.
- Cold Room.
- One-Floor Office Area with locked room, archive, coffee room, ICT room, first aid room/site clinic, washroom and toilets.

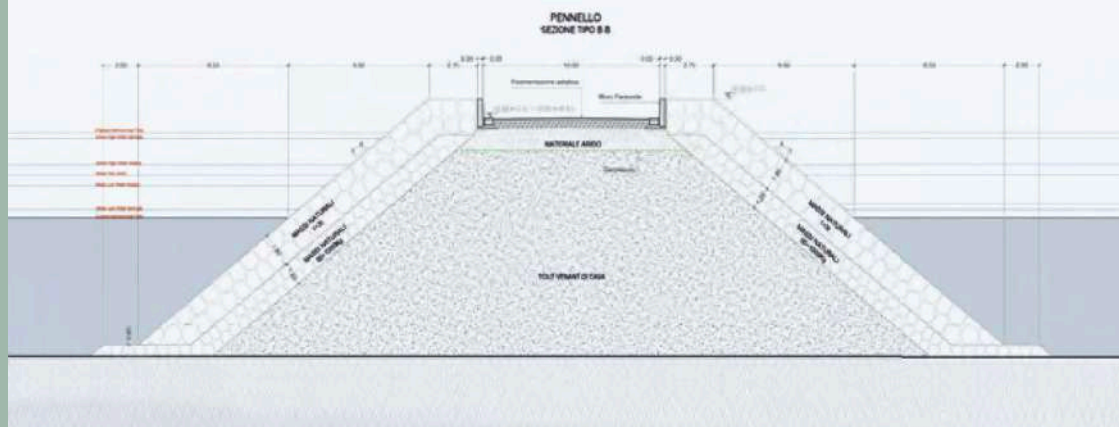
Phase 1



3. WAREHOUSE & OFFICES

Architectural Prospects.

Phase 1

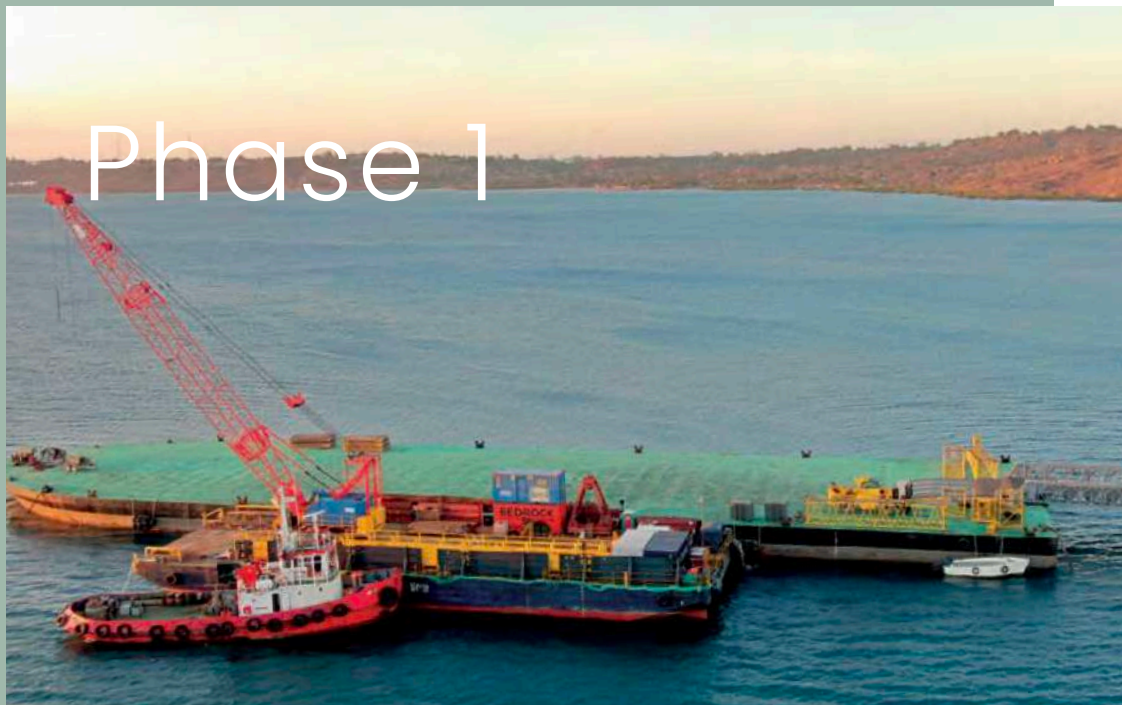


4. WHARF / CAUSEWAY

Connecting Pontoon to Shoreline.

KEY FEATURES:

- Designed to allow berthing of the vessels for loading and offloading of materials and equipment for temporary storage or fabrication and ship-to-ship transfer.
- Adjacent to the Logistic Base in order to reduce double handling, increase the operational efficiency and reduce risks.
- Its location in a natural bay allows to operate under all weather and sea conditions.



Phase 1

5. PONTOON / BARGE

KEY FEATURES:

Length Overall: 111.252m [365ft]

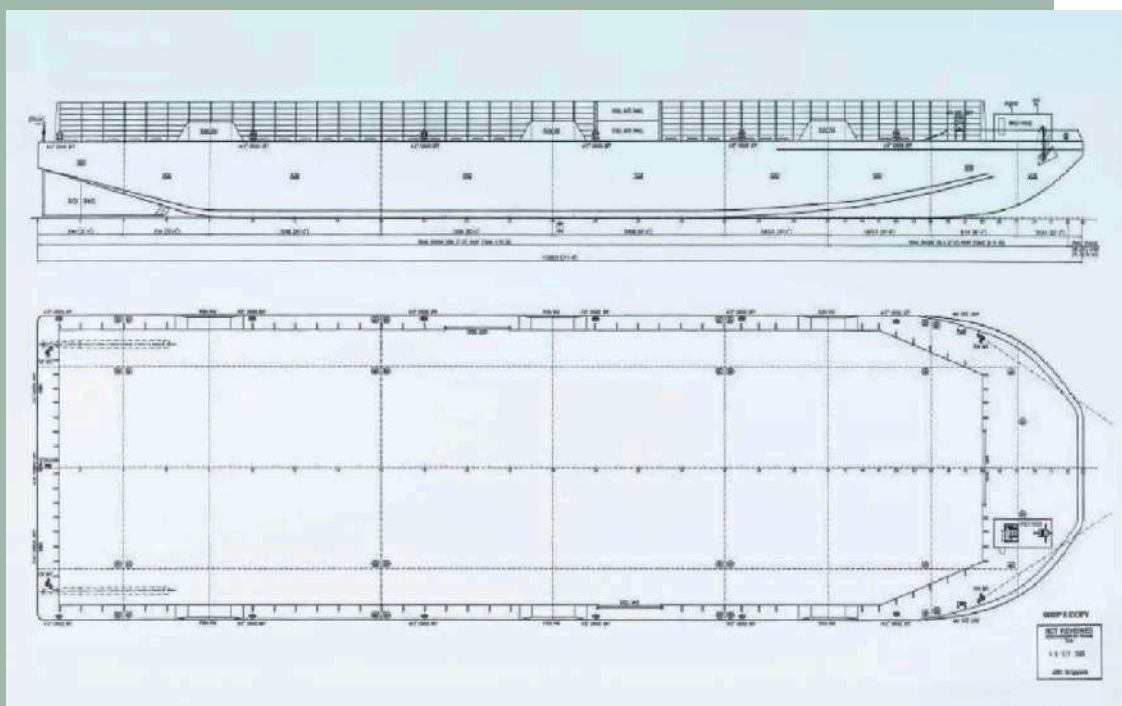
Breadth: 28.042m [92ft]

Depth: 6.934m [22ft]

GRT/NT: 5.308 / 1.592

Draft: >10m [32ft]

Deck Strength: 10 Ton /m²

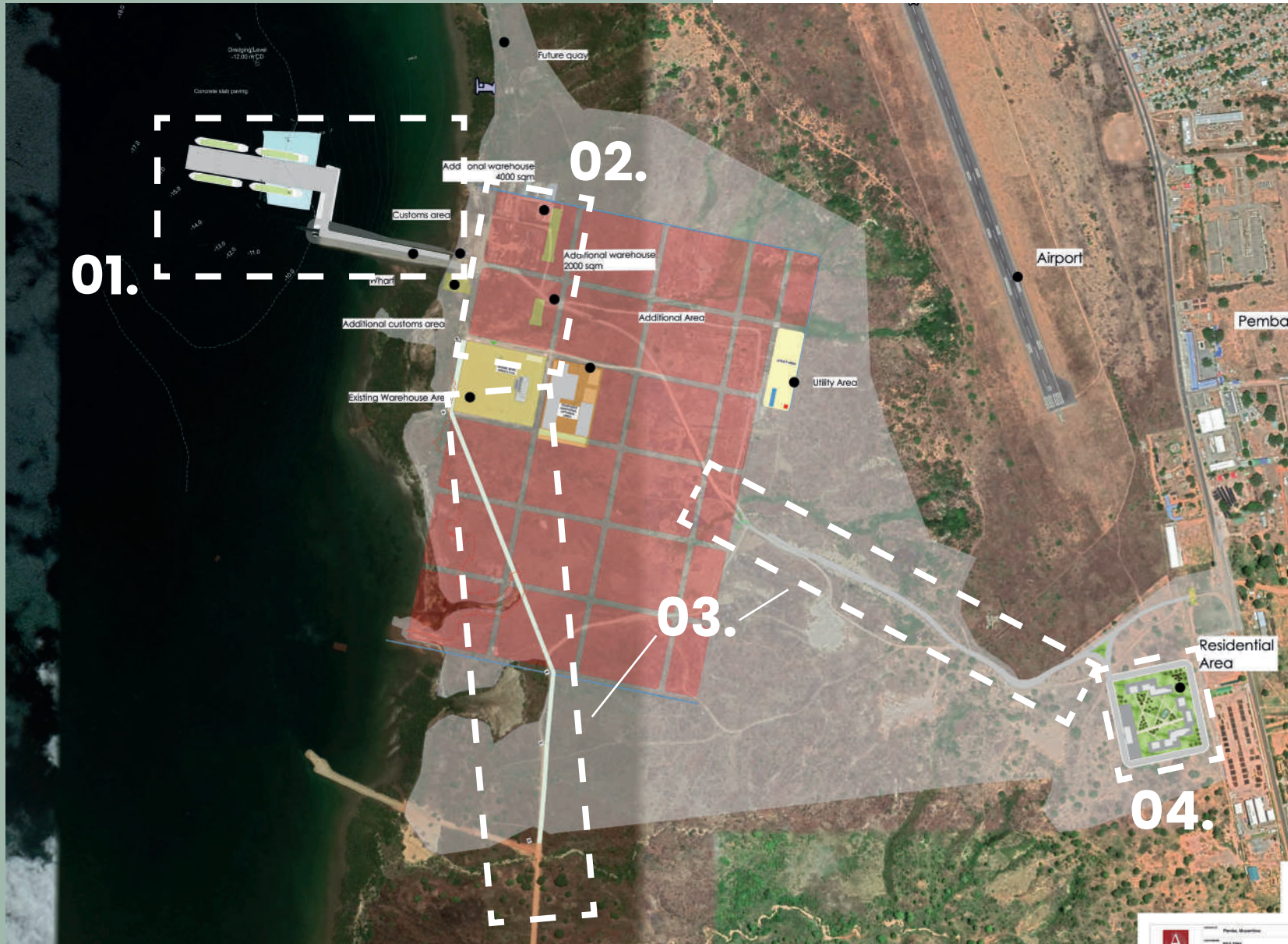




**PEMBA
OIL & GAS
SERVICE CENTRE**

Phase 2

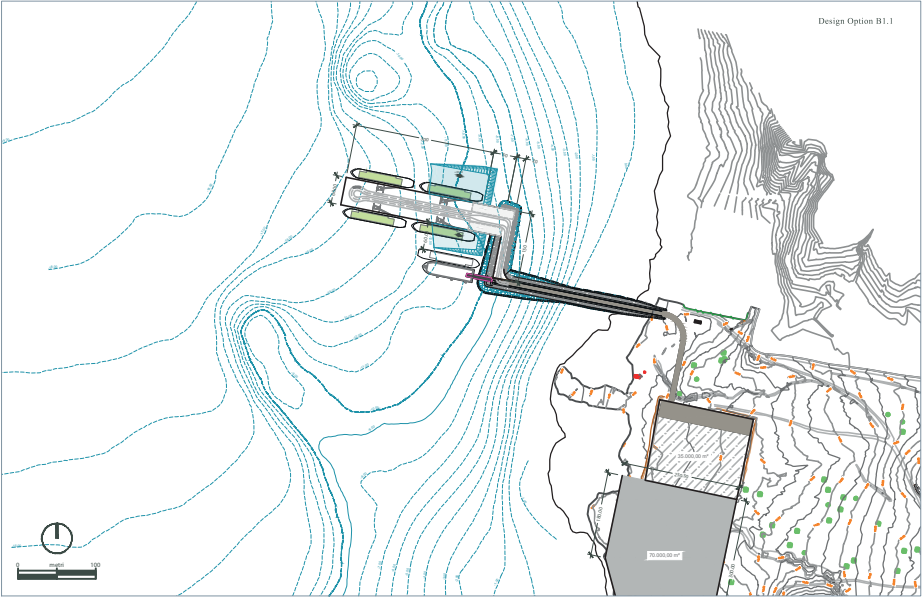
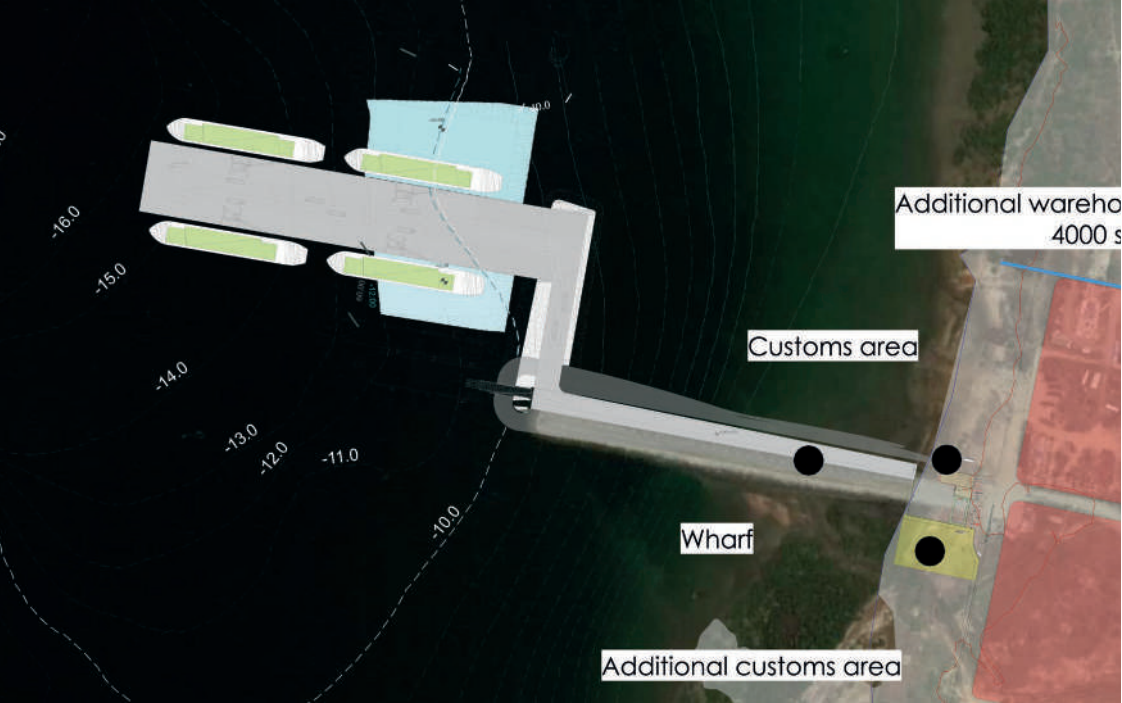
Phase 2 General Overview



Phase 2



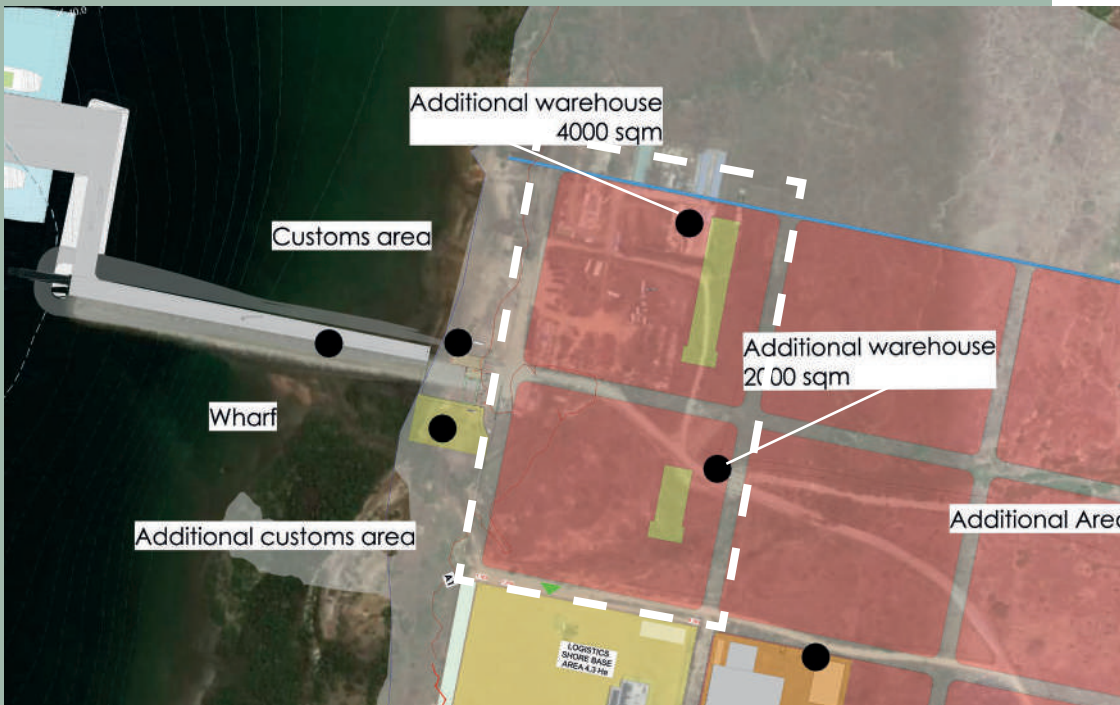
01. JETTY



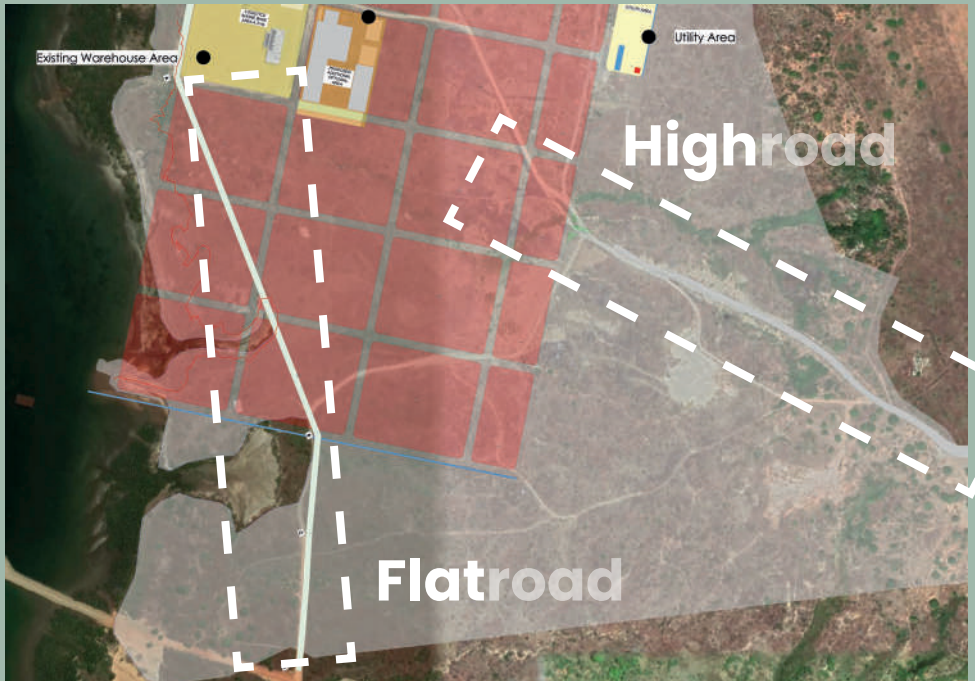
Phase 2



02. ADDITIONAL PORT FACILITIES



Phase 2



03. ROAD NETWORK



Phase 2



04. RESIDENTIAL





**PEMBA
OIL & GAS
SERVICE CENTRE**

Site pictures









enhils

Mozambique Port Terminals

Contact us for further information:

www.enhils.co.mz

email: services@enhils.co.mz

ENH INTEGRATED LOGISTICS SERVICE, S.A.

Av. 25 Setembro, n.º 270, Predio Time Square, Bloco II, 1º andar,
Cidade de Maputo, República de Moçambique

Telefone: +258 21 42 12 43

ENH INTEGRATED LOGISTICS SERVICE, S.A.

Estr. Nacional n.º 106, Bairro Mahate, Estaleiro da Base Logística,
Cidade de Pemba, República de Moçambique

Telefone: +258 84 336 9153